

AGENDA

1. Welcome & Introduction to the Panel (6:30-6:45 pm)
2. Presentation: Managed Retreat of the North Beach Parking Lot with interactive polling for workshop participants (6:45-7:30 pm)
3. Questions & Answers Session with the Panel (7:30-8:00 pm)*
4. Adjourn (8:00 pm)

* Questions can be submitted at any time through the chat option on Zoom but will not be answered until after the presentation.

GROUND RULES

1. Please keep your microphone muted unless you are asked to unmute by a host.
2. Please submit all questions to the panel using the chat option.
3. Please be respectful of other participants' questions/comments.
4. Future workshops will be more interactive in soliciting input and comments.

Managed Retreat of the North Beach Parking Lot

Public Workshop #1. February 17, 2021



**CALIFORNIA DEPARTMENT OF
PARKS AND RECREATION
(San Diego Coast District)**

**LOS PEÑASQUITOS LAGOON
FOUNDATION**
Connecting Communities Since 1983



“Facts do not cease to exist because they are ignored”
– Aldous Huxley

WHY PLAN FOR THE FUTURE?



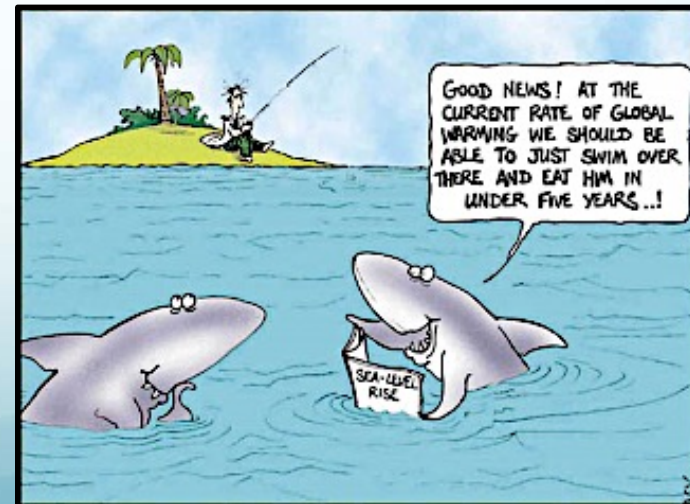
Photo by M. Hastings



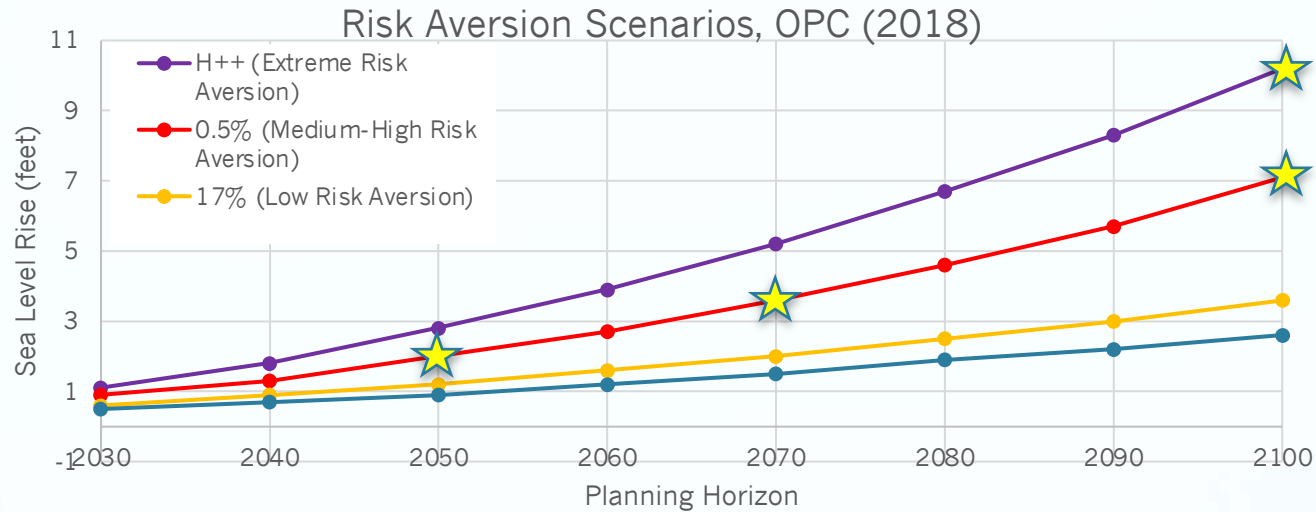
Photo by M. Hastings



Photo by M. Hastings



PLANNING FOR SEA LEVEL RISE (SLR)



Planning Horizon (Year)	Likely Range of SLR (66% Probability is between)	1 in 200 Chance SLR is Between (0.5% Probability)	H++ Scenario - No Probability Assigned
Risk Aversion Scenario	Low Risk Aversion	Medium-High Risk Aversion	Extreme Risk Aversion
2050	0.5 – 1	1.8	2.8
2070	0.8 – 1.7	3.3	5.2
2100	1.3 – 3.1	6.7	10.2

COASTAL FLOODING



Wave energy entering LPL Inlet on a +4.8 feet high tide (12/15/2015). Photo: M. Hastings



Photo by GHD



Photo by GHD



Photo by GHD

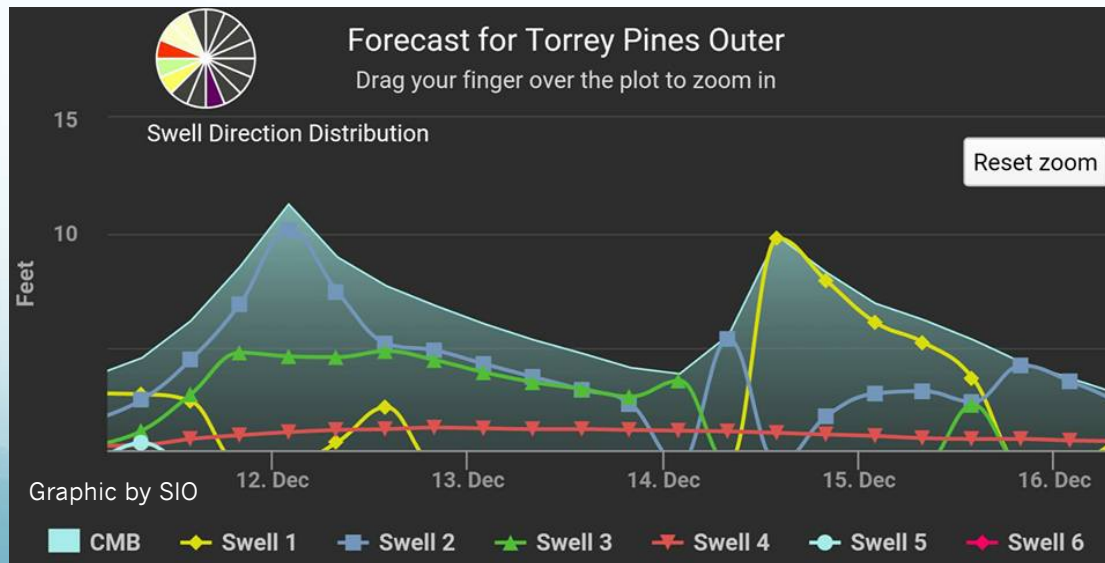


Photo by GHD

WHAT IS MANAGED RETREAT?

Overview

GENERAL DEFINITION:

Managed retreat is “the purposeful, coordinated movement of people and human infrastructures away from risks.”

APPLICATION TO COASTAL COMMUNITIES:

Sea level rise will affect low-lying coastal communities through coastal erosion and persistent flooding that can significantly damage human infrastructure and displace populations.

EXAMPLES:

- Relocation – removal and inland relocation of infrastructure.
- Realignment – replacing hardened flood control structures (e.g., sea walls) with “soft” coastal landforms (e.g., living shoreline).

LIVING SHORELINES CONCEPT

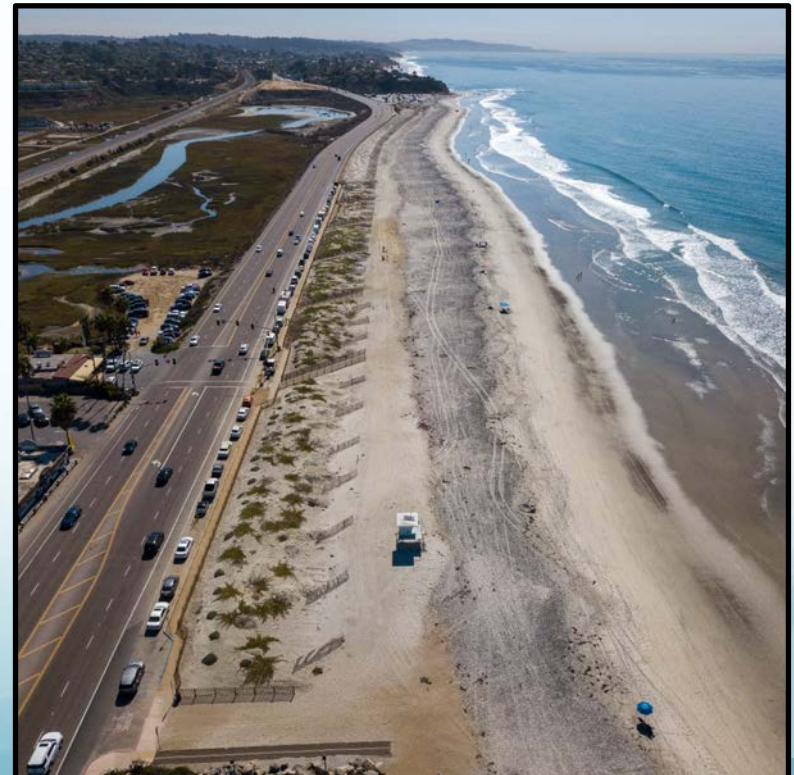
A NATURE BASED APPROACH FOR COASTAL PROTECTION

Photos by GHD

Before



After



WHY ARE WE HERE TODAY?

- To ask for your input on managed retreat alternatives for the North Beach Parking Lot at Torrey Pines State Natural Reserve.

WHY NOW?

- It is early in the planning process, so your input can help inform design and shape the project.



POLLING QUESTION #1

Which of the following best describes how you most frequently enjoy/utilize the North Beach Parking Lot and beach? (Choose up to 3)

- a) Access for Active Recreation (surfing, walking, swimming, paddle boarding, beach combing).
- b) Organized Programs (Junior Lifeguards, Running Clubs, Beach Cleanups)
- c) Passive Recreation (painting, photography, coastal views, bird watching).
- d) Beach drop offs (Junior Lifeguards, family members).
- e) Access to amenities (bathrooms, showers).



POLLING QUESTION #2

I am a resident of.....

- a) a community near the North Beach Parking Lot (Torrey Pines or Del Mar).
- b) a community located up to 5 miles from the North Beach Parking Lot.
- c) a community located between 5-15 miles from the North Beach Parking Lot.
- d) a community located further than 15 miles from the North Beach Parking Lot.



POLLING QUESTION #3

I typically get to the North Beach Parking Lot by...

- a) walking or riding a bike.
- b) by automobile and park in the lot.
- c) by parking along Carmel Valley Rd and walking to the lot.
- d) dropped off by automobile.
- e) public transportation.



PROJECT LOCATION



PROJECT BACKGROUND

- Identified as a priority in the 2017 update of the Los Peñasquitos Lagoon Enhancement Plan.
- Climate Ready Grant 2019 – State Coastal Conservancy
- Three broad approaches were selected for consideration:
 - Work within existing footprint.
 - Relocate to an upland location.
 - Relocate to an offsite location.
- Project Components:
 - Site Assessment
 - **Stakeholder Outreach & Engagement (Concept Development)**
 - Concept Refinement & Alternative Analysis (Feasibility Study)
 - Engineering Design (30%) for Preferred Concept



PROJECT TEAM

- **CA STATE PARKS (SAN DIEGO COAST DISTRICT) - LANDOWNER**
 - Darren Smith, District Services Manager
 - Cara Stafford, Environmental Scientist

- **LOS PEÑASQUITOS LAGOON FOUNDATION – GRANT RECIPIENT**
 - Mike Hastings, Executive Director
 - Shirley Innecken, Senior Ecologist

- **GHD – COASTAL ENGINEERING CONSULTANT**
 - Brian Leslie, Senior Coastal Scientist
 - Mitch Duran, Maritime & Coastal Engineer

- **CALIFORNIA STATE COASTAL CONSERVANCY – FUNDING ENTITY**
 - Joel Gerwein, South Coast Program Deputy Manager



HISTORY OF THE NORTH BEACH PARKING LOT



HISTORIC PHOTOS – EARLY 1900s



Coast Highway 1910



Torrey Pines Grade



Viewing north from the bluffs 1903



Coast Highway 1918

BIRTH OF SUNKEN CITY - 1932



1932 Construction of North Torrey Pines Lower Bridge over the inlet at Los Peñasquitos Lagoon.
Photo credit CA State Parks or San Diego History Center.

Sunken City created when tourist cabins on the beach moved east of coast highway during construction of Highway 101

SUNKEN CITY - 1943



Circa 1940. Sunken City after construction of Highway 101. Photo credit CA State Parks or San Diego History Center.

By 1943 Sunken City had 15 houses and a brine shrimp pond.

END OF SUNKEN CITY - 1952



Circa 1966 . North Beach Parking Lot replacing Sunken City Photo credit CA State Parks or San Diego History Center.

1952 City of San Diego turns over Torrey Pines State Beach to California State Parks and Sunken City relocated to make room for the North Beach Parking Lot (completed in 1968).

Showers



NORTH BEACH LOT & CLIMATE CHANGE

- Vulnerability to wave erosion
- Vulnerability to inundation
- Viability of beach access ramp
- Presence of CA Gnatcatcher (CAGN)
- Vector & storm water management



PROJECT NEED

Vulnerability to Coastal Flooding

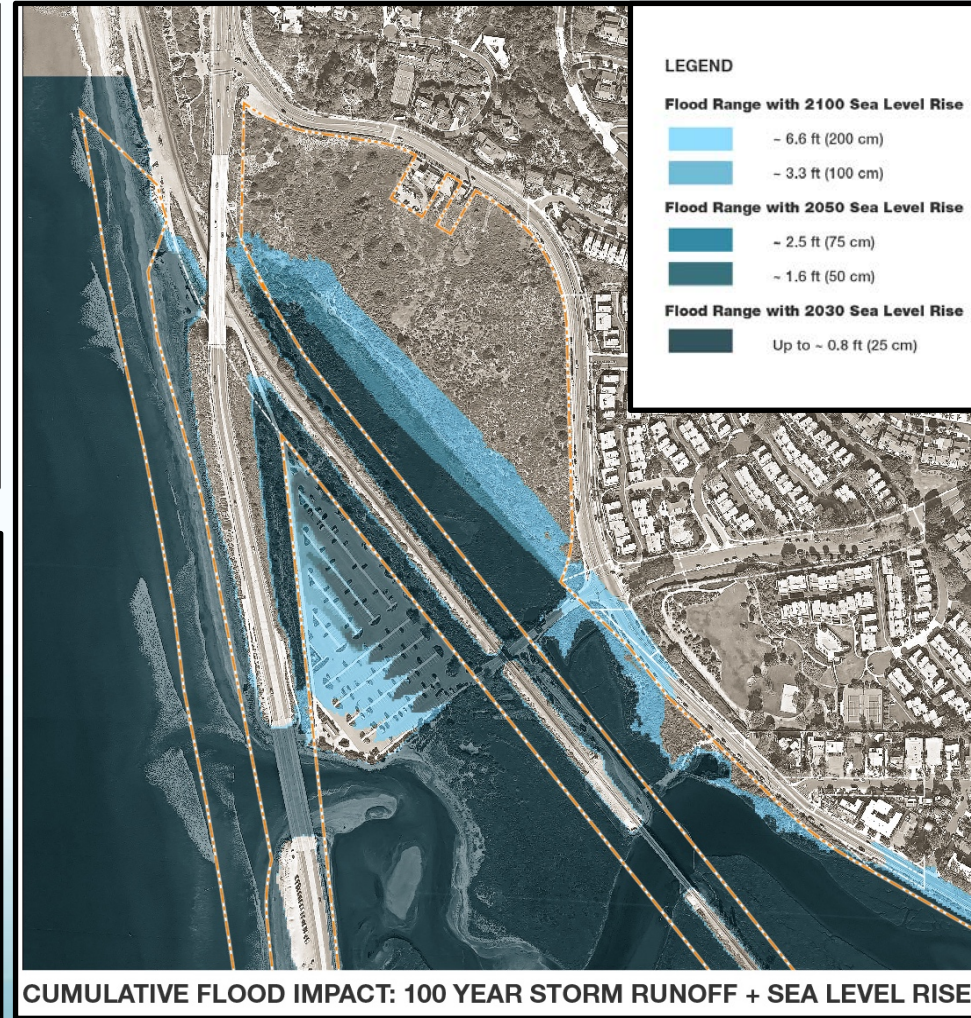
- Climate change will increase vulnerability of North Beach Parking Lot to flooding from sea level rise and storm events.



Beach access ramp (3/01/2016). Photo: M. Hastings



Beach access ramp (12/05/2017). Photo: M. Hastings



CUMULATIVE FLOOD IMPACT: 100 YEAR STORM RUNOFF + SEA LEVEL RISE

PROJECT NEED

Impaired Access to Torrey Pines State Beach

- Coastal processes (e.g., sediment transport) augmented by climate change could impair long-term access to Torrey Pines State Beach.



Beach access ramp (12/4/2013). Photo: M. Hastings



Beach access ramp (2/19/2016). Photo: M. Hastings



Beach access ramp (2/10/2017). Photo: M. Hastings



Beach access ramp (2/10/2017). Photo: M. Hastings

PRELIMINARY CONCEPTS FOR MANAGED RETREAT

Existing Footprint, Relocated Upland, Offsite, Hybrid

OPTION 1: RETREAT WITHIN REDUCED FOOTPRINT



Reduce lot size and add habitat along lot edges.

OPTION 2: RETREAT TO CARMEL VALLEY ROAD



Relocate lot upland and restore habitat in old footprint.

OPTION 3: HYBRID TO BALANCE PARKING



Reduce lot size and add upland (covered) parking. Habitat added along edges and to roof.

OPTION 4: OFFSITE



Abandon and move lot to offsite location.

CONCEPT EVALUATION CRITERIA

(DRAFT)

- Provides long-term coastal access
- Improves ecological performance (hydrology, more habitat)
- Environmental impacts
- Resiliency & long-term sustainability
- Cost & constructability
- Supports public safety (vector, first responders)
- Supports public use (parking, bathrooms)
- Supports stewardship (education, experience nature)

POLLING QUESTION #4

Which of the following features provided by the North Beach Parking Lot are the most valuable to you? (choose up to 3)

- a) Available beach parking
- b) Access to the beach
- c) Showers and bathrooms
- d) Junior Lifeguard program
- e) Presence of first responders (lifeguards, rangers)
- f) Educational kiosks and panels
- g) Other



POLLING QUESTION #5

What additional features would you like to see in the North Beach Parking Lot? (choose up to 3)

- a) Interpretive and Educational Center
- b) Hiking trails and overlooks/view platforms
- c) Native habitats and landscapes
- d) Short-term Accommodations (Camping/RV spots/housing)
- e) Metered parking
- f) Food vendors
- g) Lifeguard/Ranger Station
- h) Electric vehicle charging stations (bikes, autos)
- i) Dedicated drop off areas (Uber, Lyft)
- j) Other



NEXT STEPS

Workshop 2.
Initiate
Concept
Development
March 2021

Workshop 4.
Native
American
Consultation
TBD

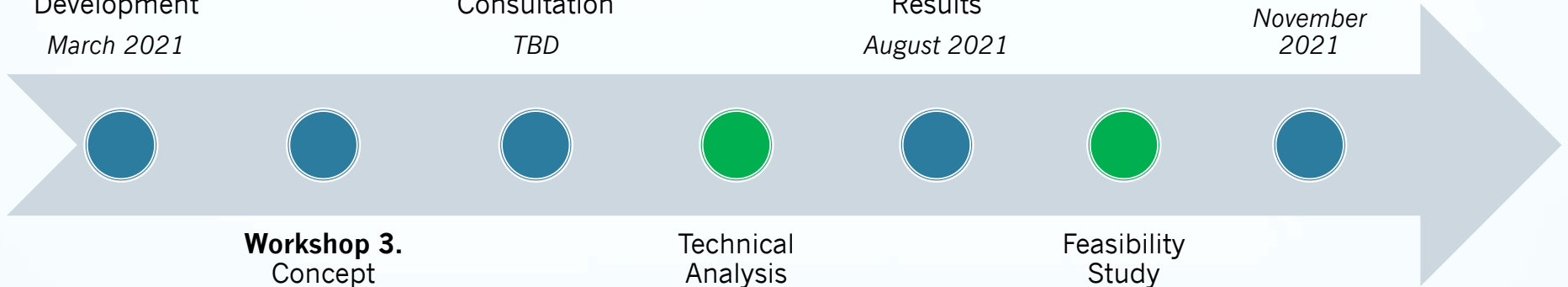
Workshop 5.
Technical
Analysis
Results
August 2021

Workshop 6.
Feasibility
Study
Results and
30% Design
*November
2021*

Workshop 3.
Concept
Review &
Evaluation
April 2021

Technical
Analysis
*May-July
2021*

Feasibility
Study
*August-
October
2021*



“Cherish these natural wonders, cherish the natural resources, cherish the history and romance as a sacred heritage, for your children and your children’s children.” — Theodore Roosevelt

THANK YOU!



Lospenasquitos.org

Photo by M. Hastings

POLLING QUESTION #6

Mentimeter Poll

Go to <http://www.menti.com/> and use code 56 68 61 8

What is your preference for meeting days for public future workshops? (Choose up to 2)

- a) Weekday Evenings
- b) Saturday
- c) Sunday
- d) I do not have a preference

